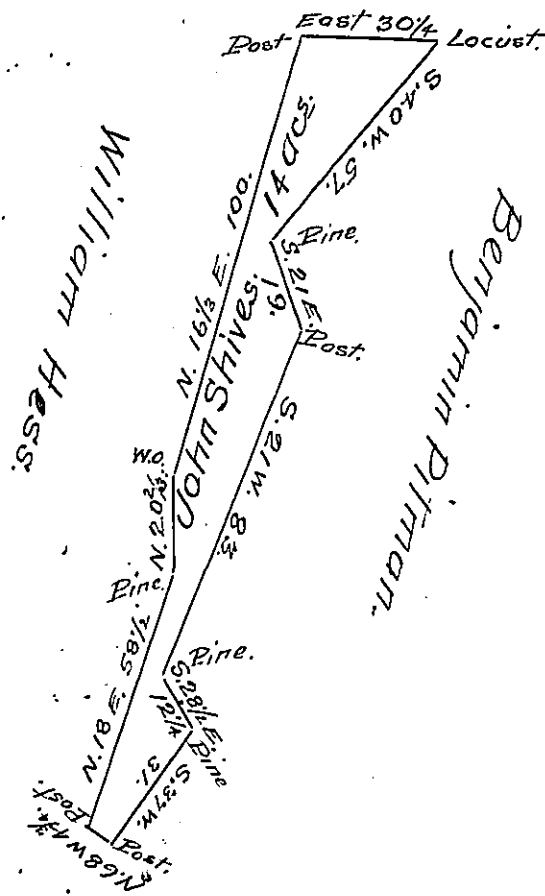


Stal. Truax.



A Draught of a tract of Land situate in Bethel Township Bedford County containing fourteen acres with allowance of six per cent for Survey'd for John Shives the 20th day of February A. D. 1816 pursuant a Warrant granted the sixth day of December A. D. 1815.

To Rich^d T. Leech Esquire
Surveyor General.

James Piper D.S.

IN TESTIMONY that the above is a copy of the original remaining on file in the Department of Internal Affairs of Pennsylvania, made conformably to an Act of Assembly approved the 16th day of February 1833, I have hereunto set my hand and caused the Seal of said Department to be affixed at Harrisburg, this thirty first day of January 1907.

Isaac B. Brown
Secretary of Internal Affairs.